

# TIMEPAC ACADEMY

Extracting information  
from BIM model - case  
study office building

Ane Ferreiro Sistiaga Project Manager/Product developer  
Benjamín González Cantó Head of Strategic Development



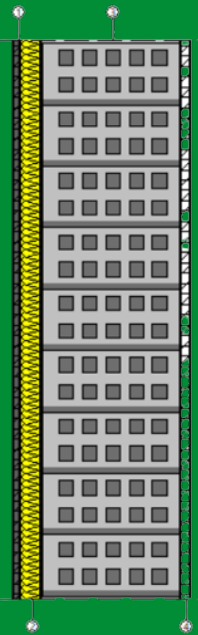
# ¿Why using BIM for EPC?

**BIM is a digital methodology** that allows Architects and Engineers to address the entire life-cycle of the building including Energy Performance Certification.

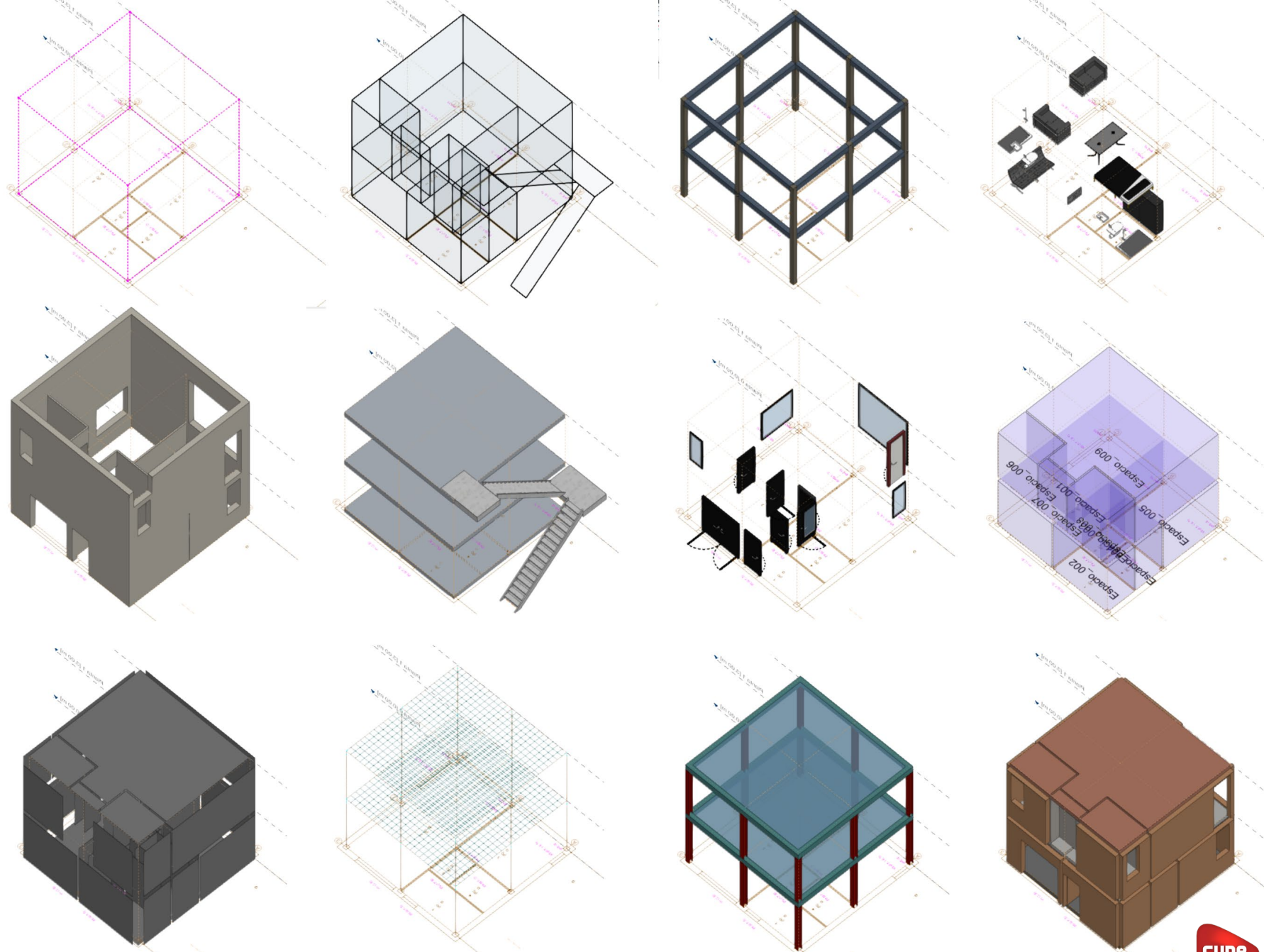
**BIM Models are 3D models with a data base** that is valuable for the Architecture, Engineering and Construction process.

**BIM Models can be use for energy simulation** taking advantage of the geometry and available data.

| Wall        |                     |
|-------------|---------------------|
| Reference   | Wall_014            |
| Level       | L1                  |
| Layer       | Arch_Walls-2        |
| Description | Concrete brick wall |
| Properties  |                     |
| Height      | 3.00 m              |
| Thickness   | 0.25 m              |
| Category    | External façade     |

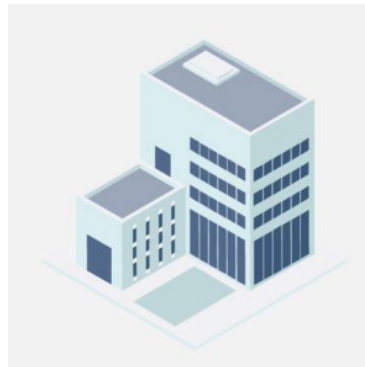


| Layers                             |  |          |
|------------------------------------|--|----------|
| 1 - Cement sand                    |  | 1.00 cm  |
| 2 - I01 - 25 mm insulation board   |  | 3.00 cm  |
| 3 - M03 - 200 mm LW concrete block |  | 20.00 cm |
| 4 - Gypsum insulating plaster      |  | 1.00 cm  |
| Total thickness                    |  | 25.00 cm |



# CONCEPTS

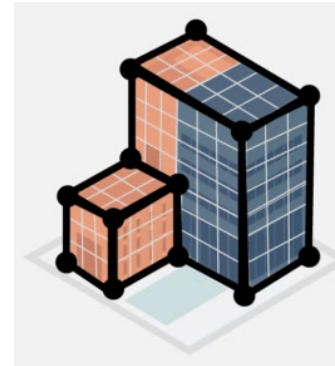
## ARCHITECTURAL MODEL



- ✓ Walls, slabs, windows...
- ✓ Model composed by solids

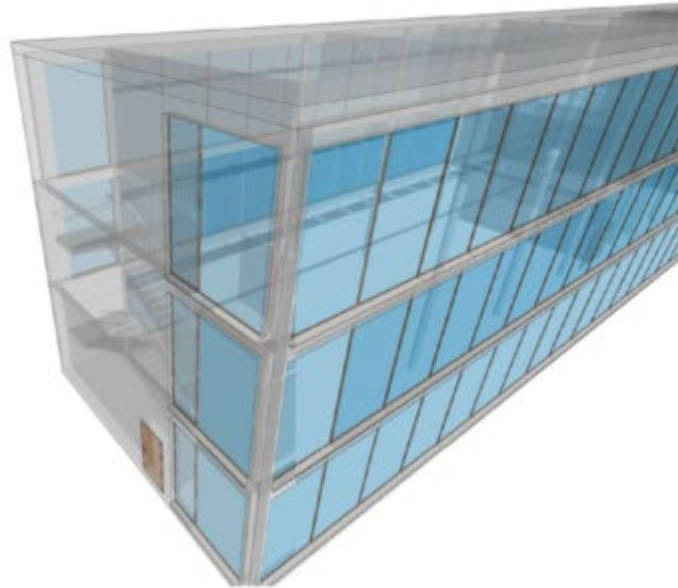
VS

## ANALYTICAL MODEL



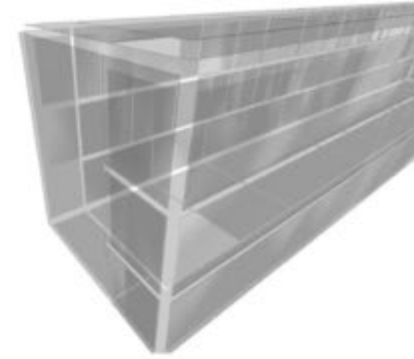
- ✓ Surfaces, edges, adjacencies...
- ✓ Model composed by geometries

# CONCEPTS

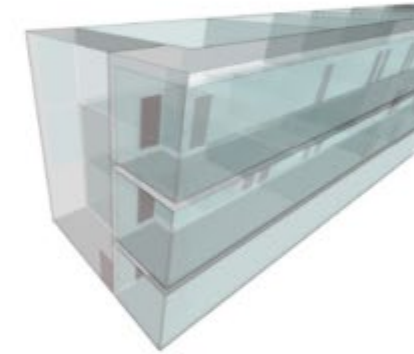


**ARCHITECTURAL MODEL**

**ANALYTICAL MODEL**  
External Surfaces



**ANALYTICAL MODEL**  
Internal Surfaces



**ANALYTICAL MODEL**  
Edges



**If you would like more information,  
please visit [www.timepac.eu](http://www.timepac.eu) or contact us at**

**[ane.ferreiro@cype.com](mailto:ane.ferreiro@cype.com)**

**[benjamin.gonzalez@cype.com](mailto:benjamin.gonzalez@cype.com)**

Thanks for your attention!